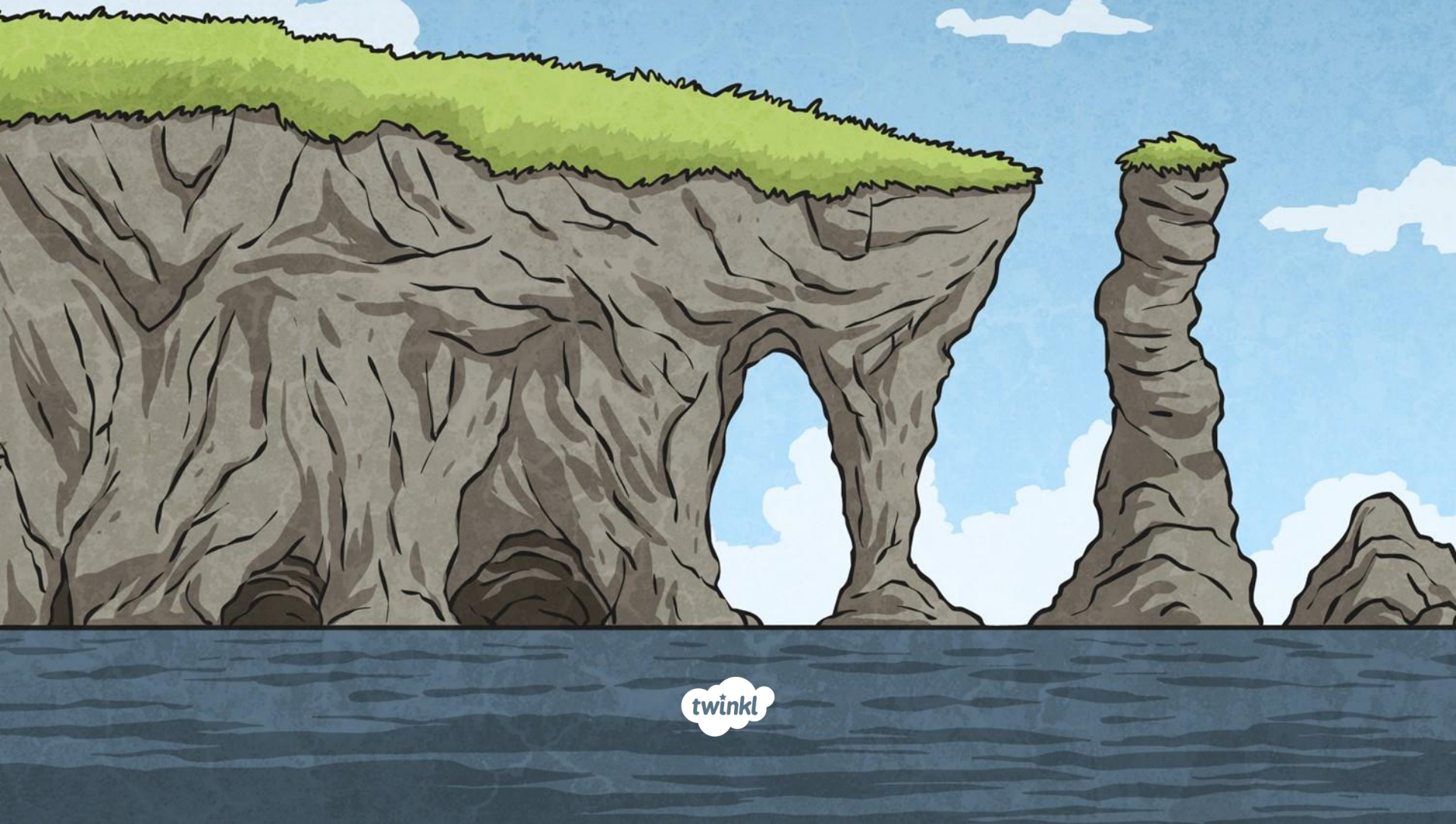




# Geography

Our Changing World

# Changing Coasts



# Aim

- I can explain how water and weather can change coastlines.
- I can explain how water and weather have changed the coastline of the UK over time.

# Success Criteria

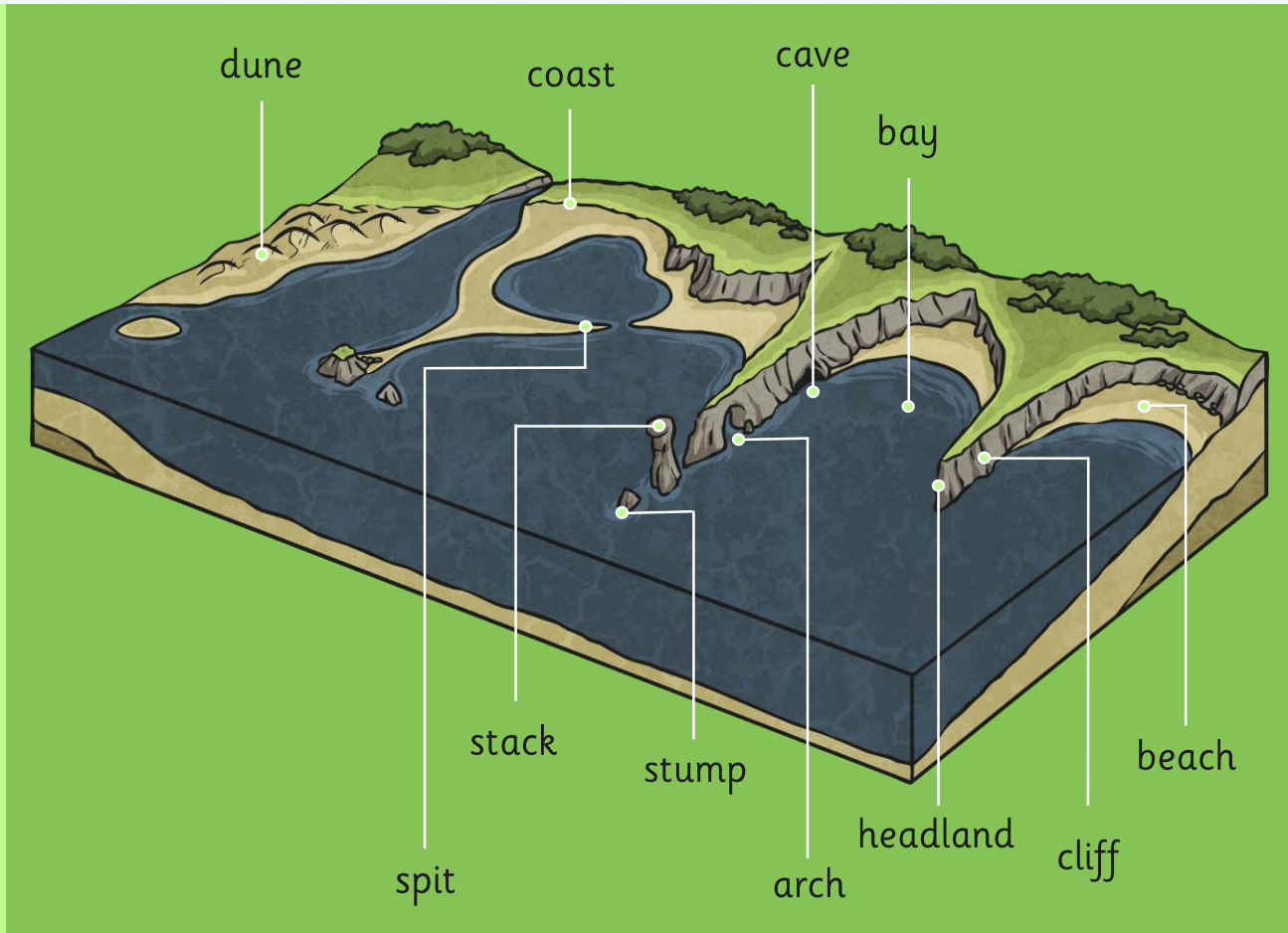
- I can tell you how erosion and deposition change the look of a coastline.
- I can describe how a coastline might have looked in the past.
- I can describe how a coastline might look in the future.
- I can name an area of the UK which has been affected by coastal erosion.
- I can tell you how the shape of Spurn Head has changed over time.



# Features of Coastlines



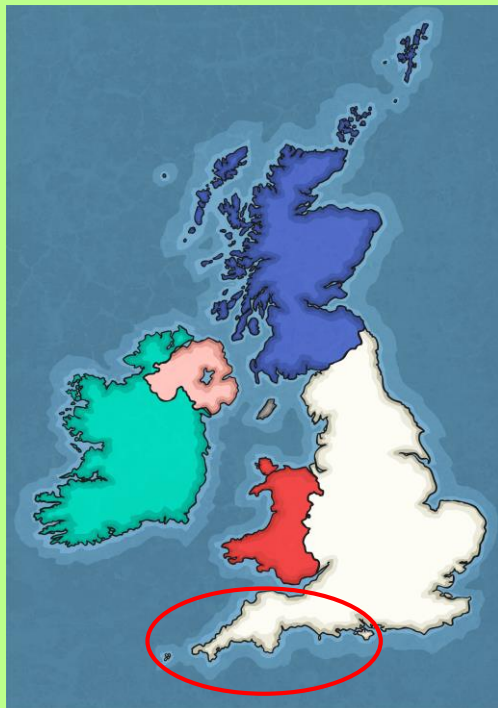
coast  
bay  
headland  
beach  
dune  
cave  
cliff  
arch  
stack  
stump  
spit



# How Coastlines Change



Watch this video. Coastal changes in the UK have created a varied and dramatic coastline, especially in the South West.



Caves in Tintagel,  
Cornwall



Durdel Door,  
Dorset



Newquay,  
Cornwall



Towan Beach,  
Cornwall



Lulworth Cove,  
Dorset



Ilfracombe,  
Devon



# Is All Coastal Change Slow?



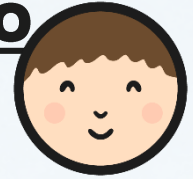
Watch this video.

Why is coastal change so much quicker on the Holderness coast?



Photos courtesy of pete riches (@flickr.com) - granted under creative commons licence - attribution

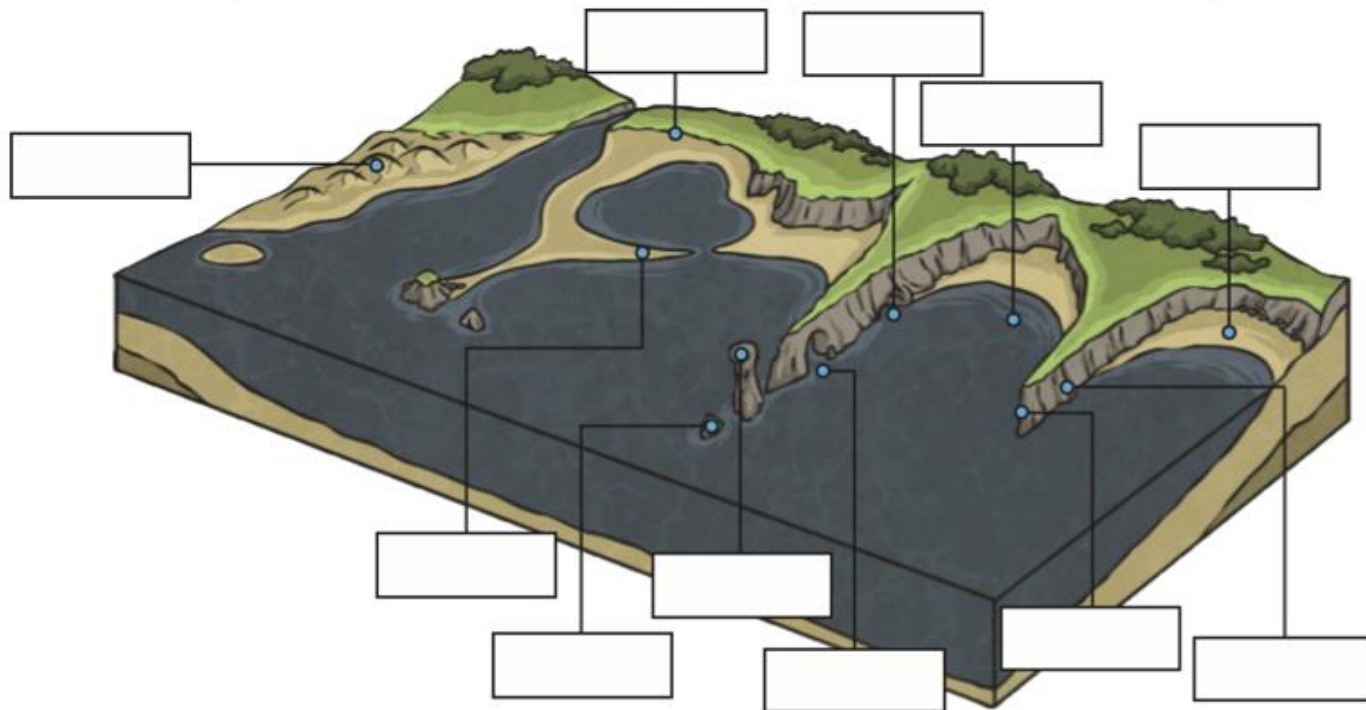
# L.C. To revise what we have learnt so far about coastal features.



Work sheet is in your pack

## L.C. To revise what we have learnt so far about coastal features.

Task: Label this diagram with the words at the bottom using what you have learnt so far about coastlines (answers on the back)



coast

bay

headland

beach

dune

cave

cliff

arch

stack

stump

spit



