

A lush, dense tropical rainforest scene. The foreground is filled with various green plants, including large, fan-shaped leaves and many ferns. The background shows a thick canopy of trees with sunlight filtering through the leaves, creating a dappled light effect. The overall atmosphere is vibrant and natural.

LO:

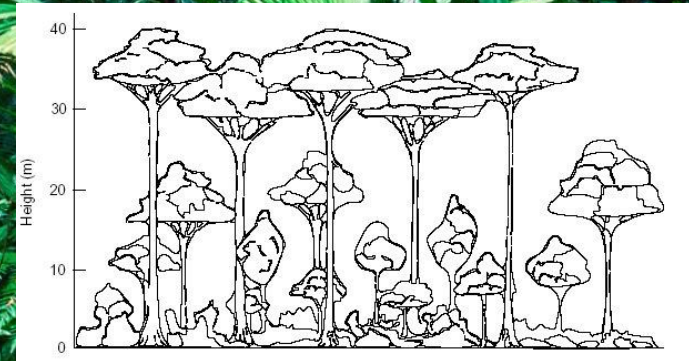
To identify and describe the layers of a rainforest by creating a class collage.

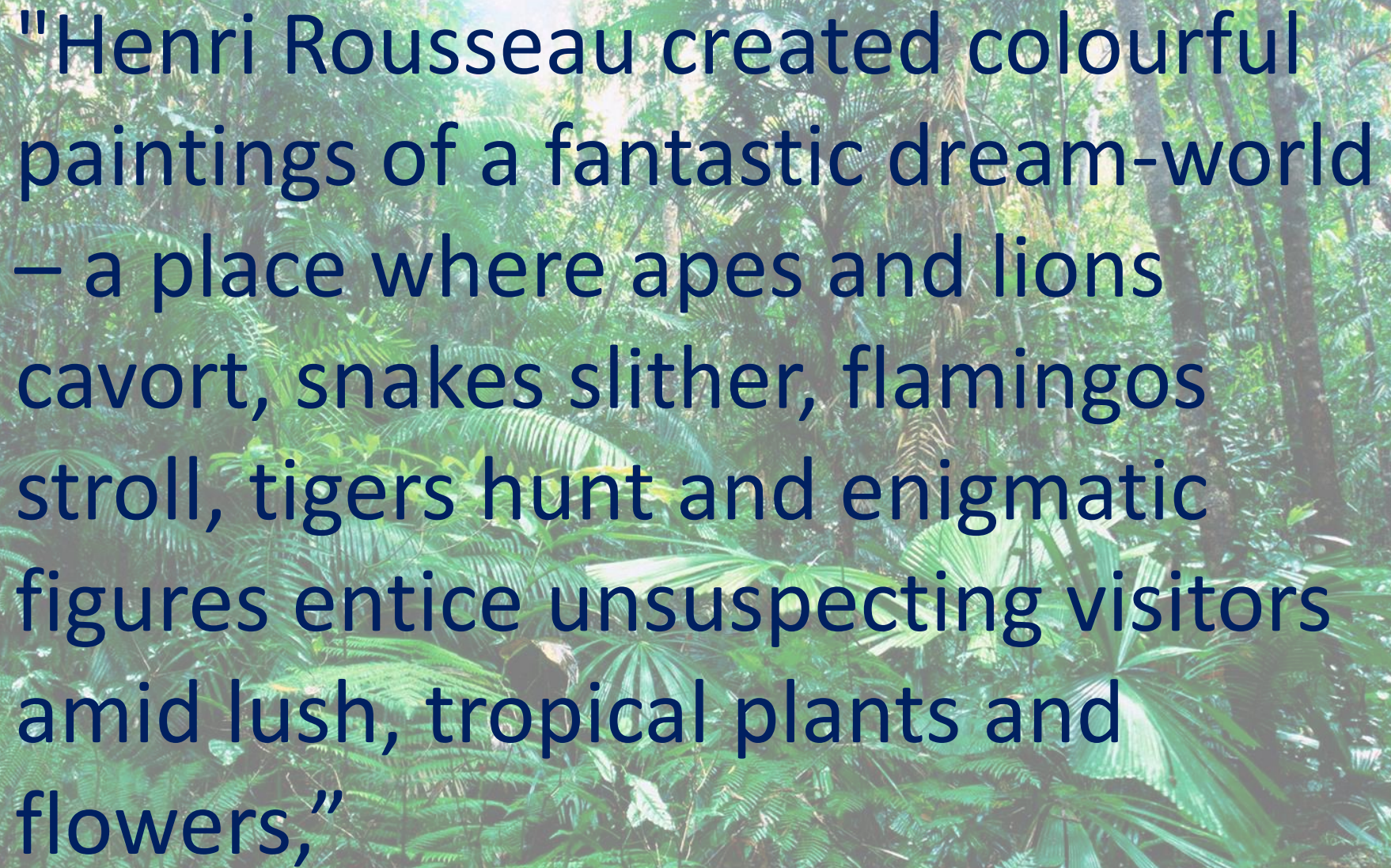
To explore the work of Henri Rousseau.

LO 2: To identify and describe the layers of a rainforest.

Press me to
watch a short film
clip about the
rainforest.

Click on the diagram below to see
a beautiful short film of the
rainforest. Which animals can you
see living in different layers?



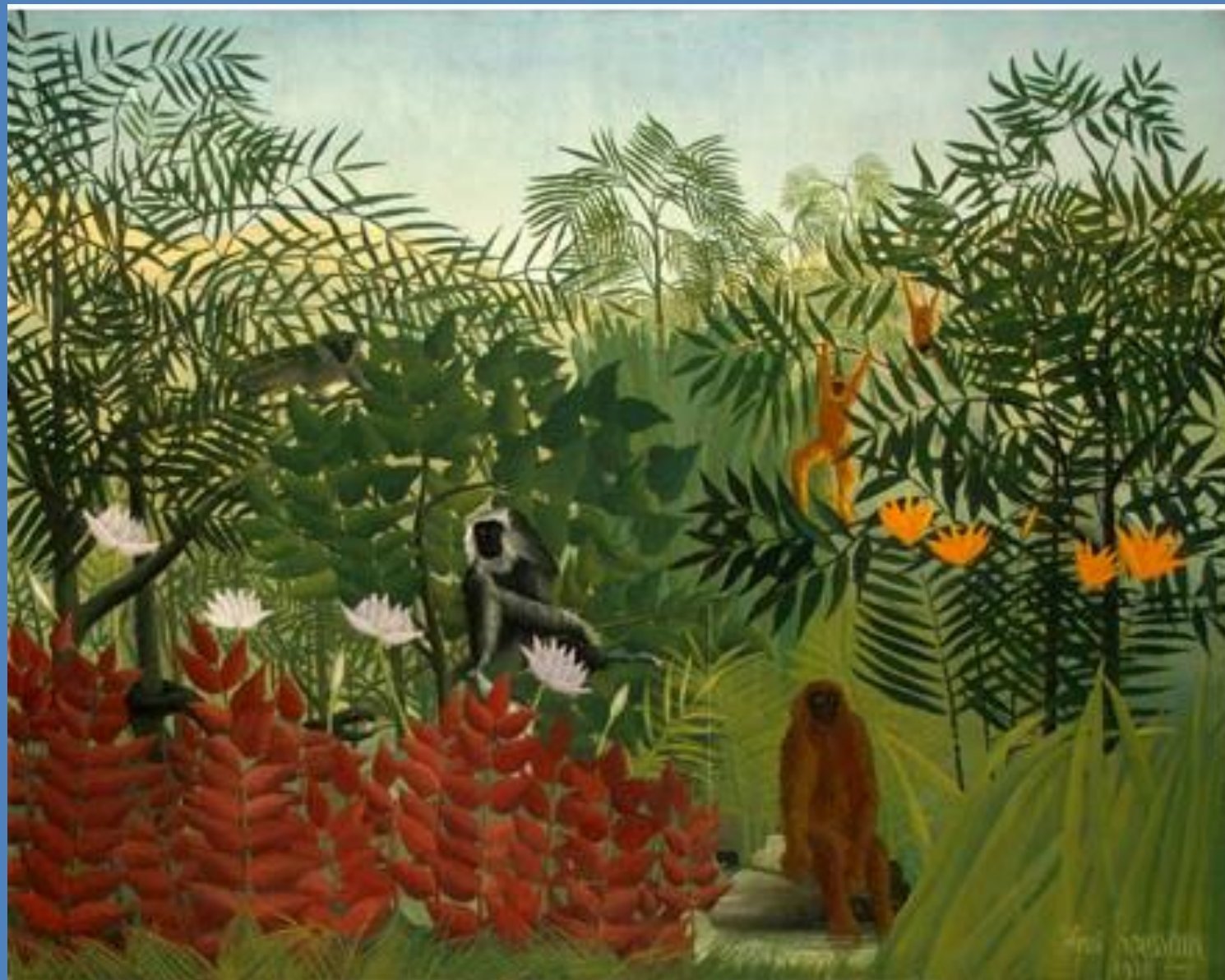


"Henri Rousseau created colourful paintings of a fantastic dream-world – a place where apes and lions cavort, snakes slither, flamingos stroll, tigers hunt and enigmatic figures entice unsuspecting visitors amid lush, tropical plants and flowers,"

Now it's your turn!

'The Merry Jesters'
1906. Oil on canvas





Henri Rousseau, *Tropical Forest with Monkeys* (1910)



Now we are going to do some art!

You need to recreate the Amazon using collage techniques.

That means you will be cutting and sticking using different materials.

You may draw something, colour it and then stick onto it.

You may build up an individual tree or show a whole scene.

You can be as creative as you like with the materials you have collected!

SUCCESS CRITERIA:

- Your collage must show the different layers visible in the photographs.
- Your collage must fill the paper.