



Making
S=P+A+C+E
for my learning
for **ME**
for **EVERYONE**

Parent Coffee Morning
Thursday 17th March 2022
Making **S=P+A+C+E** for learning



4 Priorities



The
CHILD

Inclusion and well-being at the heart of all we do - Making **S+P+A+C+E** for **EVERYONE**



Nothing but the
CHILD



Improved outcomes for **EVERY CHILD** in English

A creative, continuous and consistent mastery curriculum preparing for life

Following our **GOLDEN THREADS**



Embedding **EYFS** developments

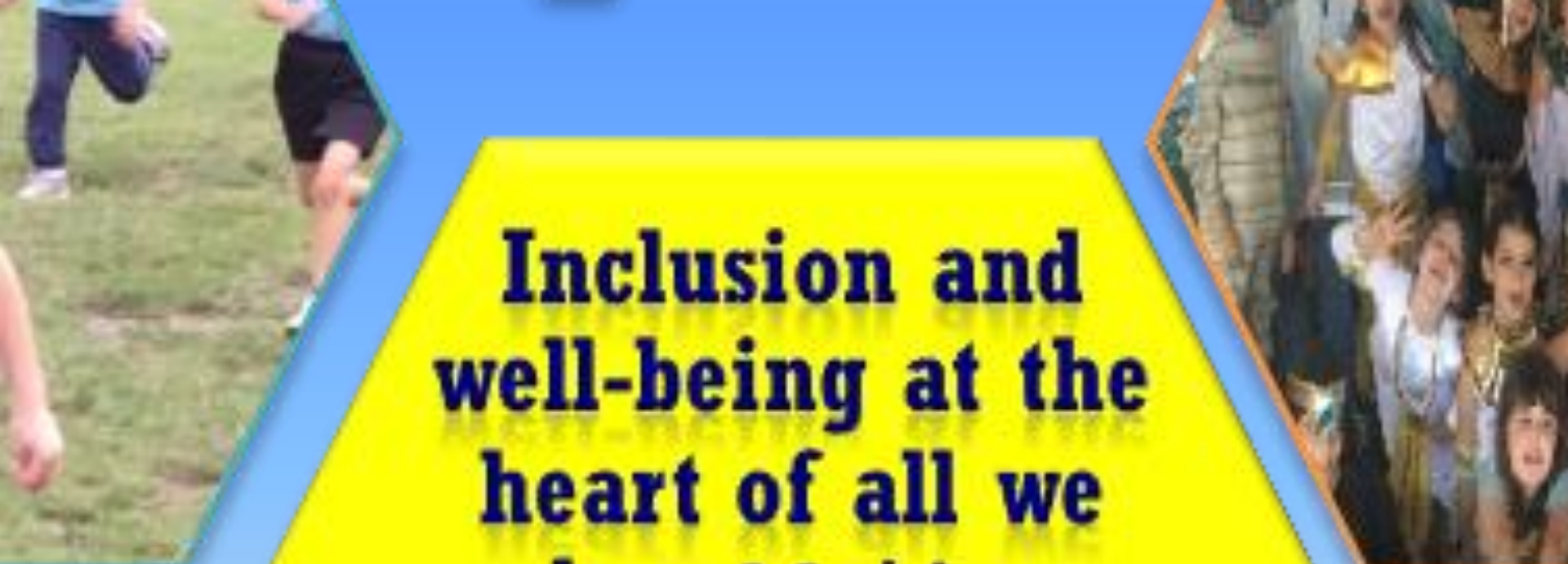


Making **S+P+A+C+E** for learning

The whole
CHILD



School Improvement Priorities 2021-22



**Inclusion and
well-being at the
heart of all we
do - Making**

S=P+A+C+E for

EVERYONE

**ved
nes
ERY
in**

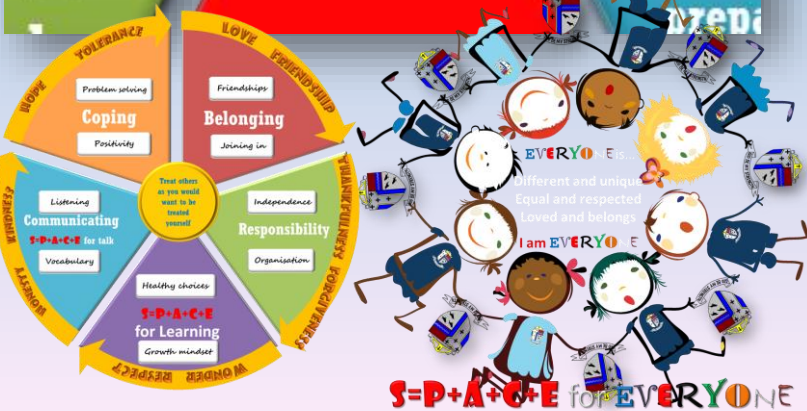
**A c
cont
CO
m
CITY**



Raising the Bar AND Closing the gaps:

Ensure the best possible outcomes for **all children and staff** by a focus on real inclusion, mental health and wellbeing

- Building on Making **S=P+A+C+E** to talk
- Embedding Making **S=P+A+C+E** for **ME**
- Ensuring we make **S=P+A+C+E** for **EVERYONE**
- Every child is everyone's child – SEN (Caroline)
- Mental Health and wellbeing (Claire)
- Impact of Music on brain development and learning research (Maureen)
- Community cohesion research – just how inclusive are we? (Thiago)





EVERYONE is...

Different and unique
Equal and respected
Loved and belongs

I am EVERYONE

S=P+A+C+E for EVERYONE



S=P+A+C+E for **EVERYONE**

A celebration of belonging, of uniqueness and community

EVERYONE is welcome here

As part of our School family, as part of God's world.

Who is everyone?

EVERYONE...

Different and unique

Equal and respected

Loved and belongs

YOU are **EVERYONE**



S=P+A+C+E for **EVERYONE**

EVERYONE is...

Different and unique

Equal and respected

Loved and belongs

I am **EVERYONE**



Inclusion Team

Inclusion Team



Kate Carter

Deputy Headteacher
Designated
Safeguarding Lead
Inclusion Team Leader
ECT mentor



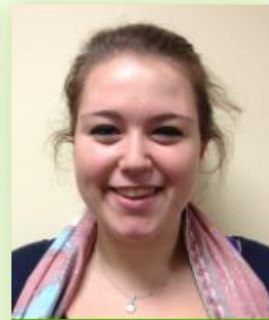
Caroline McNiff

SENCo
ECT Mentor



Claire Daniels

Home School Link
Worker
Mental Health Lead



Annalise Baldock

SEN Assistant



Heather Mitchinson

ELSA (Emotional
Literacy Support
Assistant)



Alison Skobelski

ELSA (Emotional
Literacy Support
Assistant)



Children's Groups

Information sharing
Confidence building
Awareness
Strategies
Acceptance
Understanding
Identifying positives and attributes

https://www.youtube.com/watch?v=7_LIC-9rEi0



What have we learnt so far...

- *What the children have said... People with neurodiversity...*
- Can see the world differently
- Different ways of working
- Have special focuses
- I have learnt how people's brains work.
- Some people are better at some things and not others
- I have learnt about autism, dyslexia and ADHD. I've liked learning about this and I appreciate listening and sharing to other people.



School Website

www.st-thomas.surrey.sch.uk/learning/inclusion/neurodiversity-parent-support-group/

Inclusion

NEURODIVERSITY PARENT SUPPORT GROUP

As a key part of our School Improvement aims we are developing a number of support groups for parents of children with various specific learning needs.

One of our groups is for parents of children with a neurodiversity eg. ASD, ADHD. We seek to ensure that children are supported with or without a diagnosis and always want to work in partnership with parents.

This group is organised by our Inclusion team and looks to share insights, resources, advice and support for parents whose child has a diagnosis or has traits.

The group meet regularly for catch ups over a coffee in the school and the dates of the meetings are shared in the Weekly News.

For more information please contact Mrs Carter, our Inclusion Leader at mrscarter@st-thomas.surrey.sch.uk



file downloads

- Teaching your child about their diagnosis

related pages

- Equality and Diversity at our School
- Inclusion
- Quality First Learning
- Looking after our mental health and wellbeing
- Dyslexia Parent Support Group

links and contacts

- Surrey Local Offer information
- Freemantles Outreach
- National Autistic Society – Surrey Branch



**THANK
YOU!**